

# Charleville Arts Gallery Design Proposal



Prepared by LiveSpace Studio in  
conjunction with Griffith University.

Contributions by:  
Silke Hohls  
Ashlee Barker  
Dylan James  
Matt Murphy  
Meghan Stark  
Genevieve Parry  
Nadine Dickson

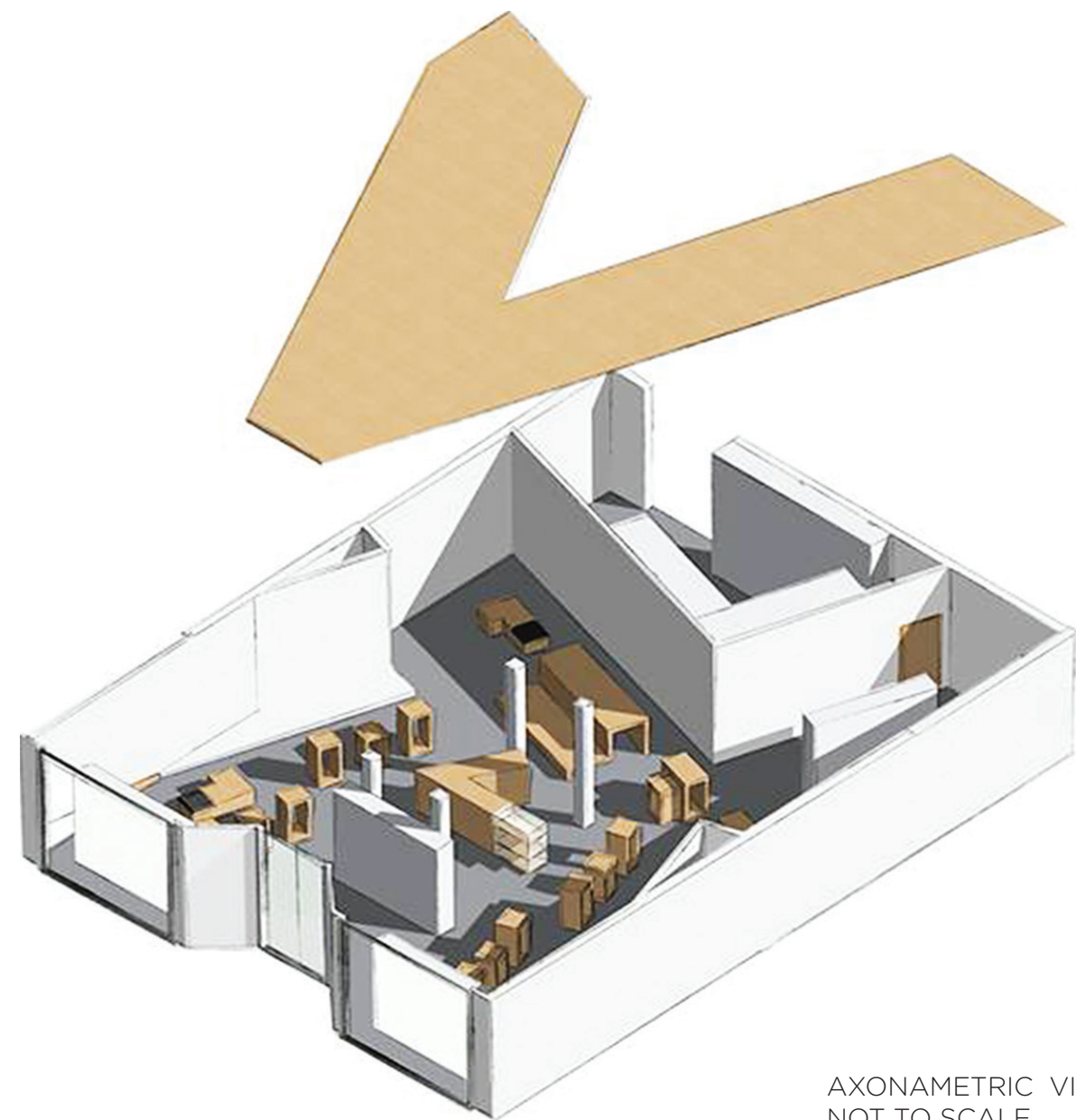
The spirit of the community of Charleville was the essential starting point when commencing this design proposal. Life in Charleville is shaped almost completely by the Warrego River as a vital life source but also a cause of destruction in the community with severe flooding. A community survey revealed that a 'water feature' was a prominent choice of emphasis in the design due to this relationship with the river. This strong element has been re-conceptualized from a water feature to a strong angular design element that informs the overall layout and design of the Charleville Arts Gallery space.



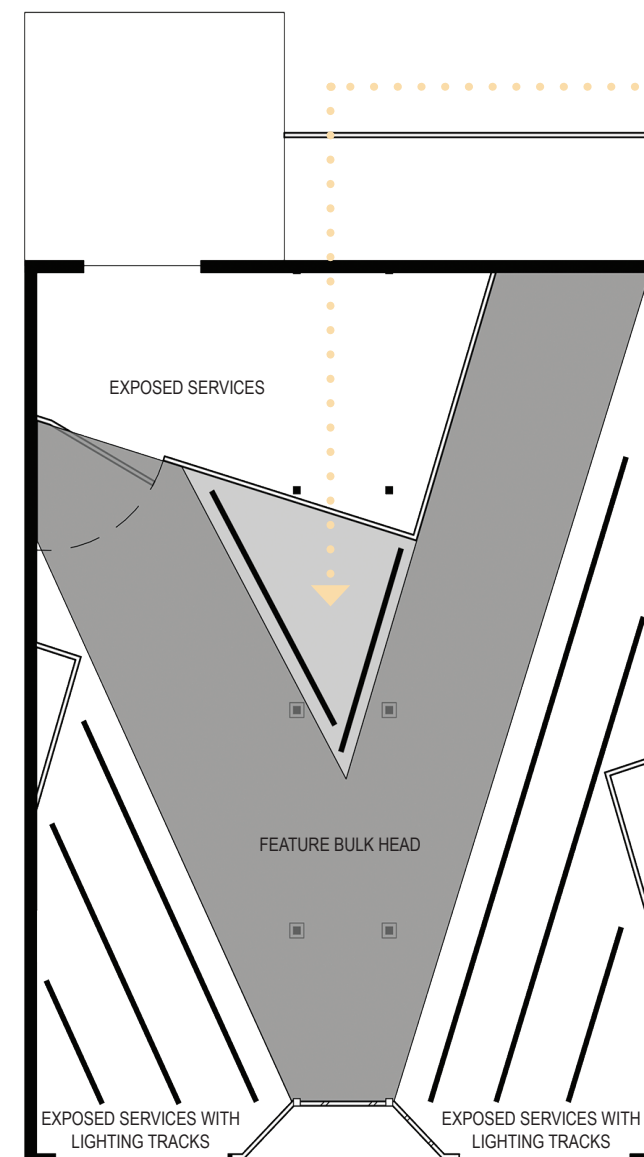








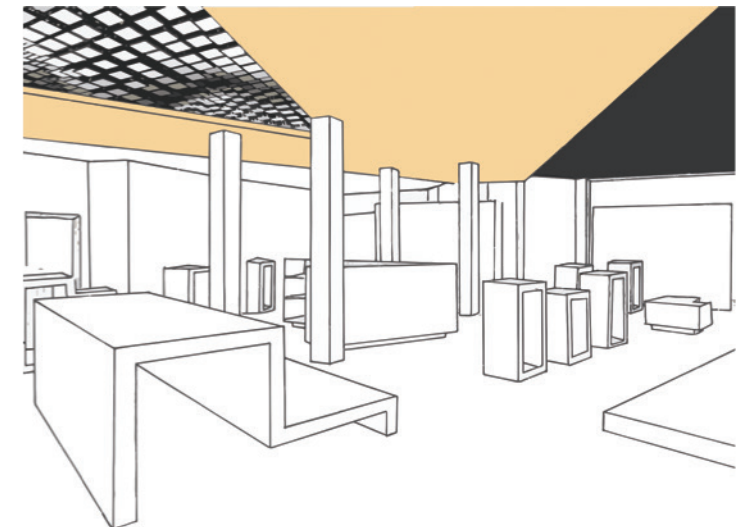
AXONAMETRIC VIEW  
NOT TO SCALE



REFLECTED CEILING PLAN - NOT TO SCALE

## Charleville Arts Gallery Lighting Installation Feature

A lighting feature or installation is suggested for the void area of the bulkhead above the point of sale counter. Philips Living Sculpture 3D Module System incorporates the latest in lighting technology that has never been used in Charleville before. This lighting system is made up of thin OLEDs (organic light emitting diodes) that can be programmed to achieve many different lighting effects. These lights are fixed to an adjustable modular base with adjustable rods. The result of this creates the freedom to create endless design opportunities that are both sculptural and interactive.



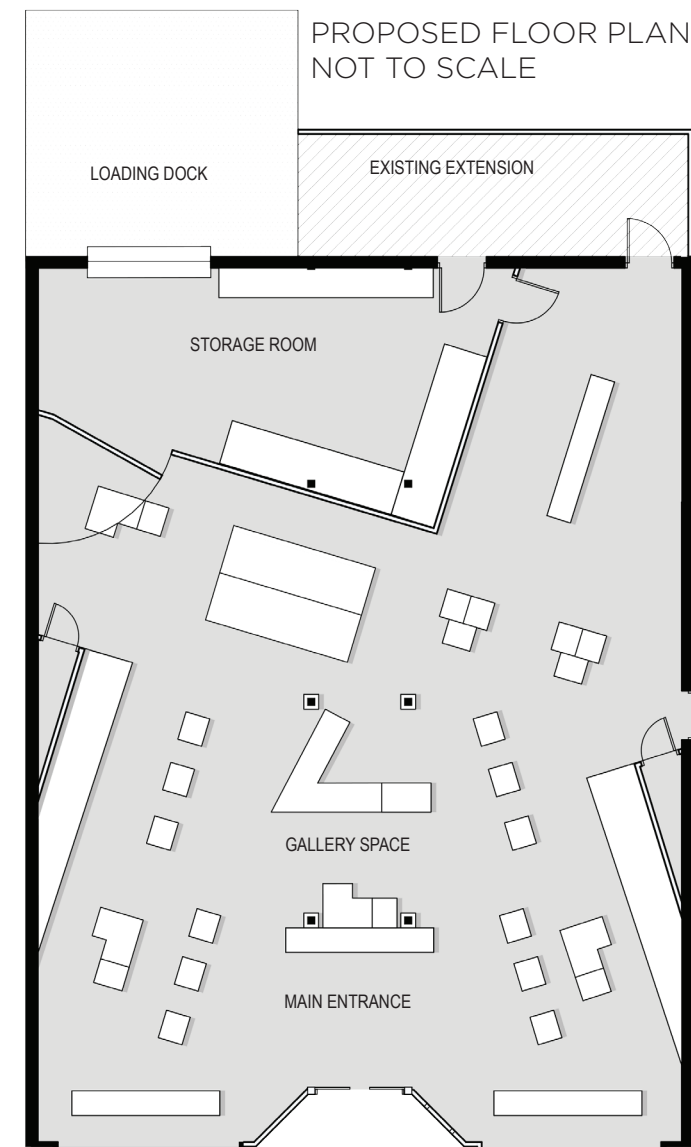
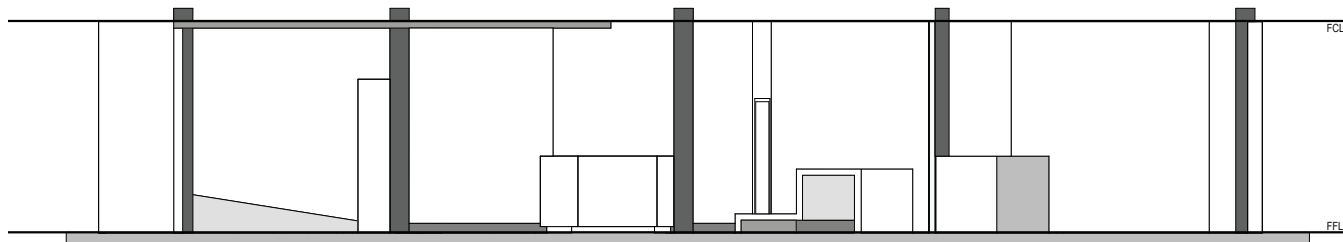




Upholding the LiveSpace core values, it was vital to ensure the design employed sustainable materials and construction practices. This value has informed the main material being sustainably sourced plywood, which all moveable elements are constructed with. To allow for critical functionality within the space, all elements are moveable, including the Point of Sale, which will be soft wired, to allow the space to be utilised in extensive ways including hosting of community events.



OVERALL SECTION - NOT TO SCALE



The plinths have been designed to be stackable by inserting them into each other as they decrease in size. This allows for a reduction in storage space when they are not in use. The only permanent fixings within the space are the storage room walls, which also hosts a large pivot wall for ease of access when setting up an exhibition, and the two small platforms and angled walls on either side of the gallery.

Other finishes in the space include a polished concrete floor for maximum commercial durability and flood resistance, white plasterboard finish on the gallery walls, moveable walls and stages to allow for a patch and paint repair after an exhibition, plywood bench seat with black upholstered cushion detail and plywood Point of sale with glass display cabinet.

